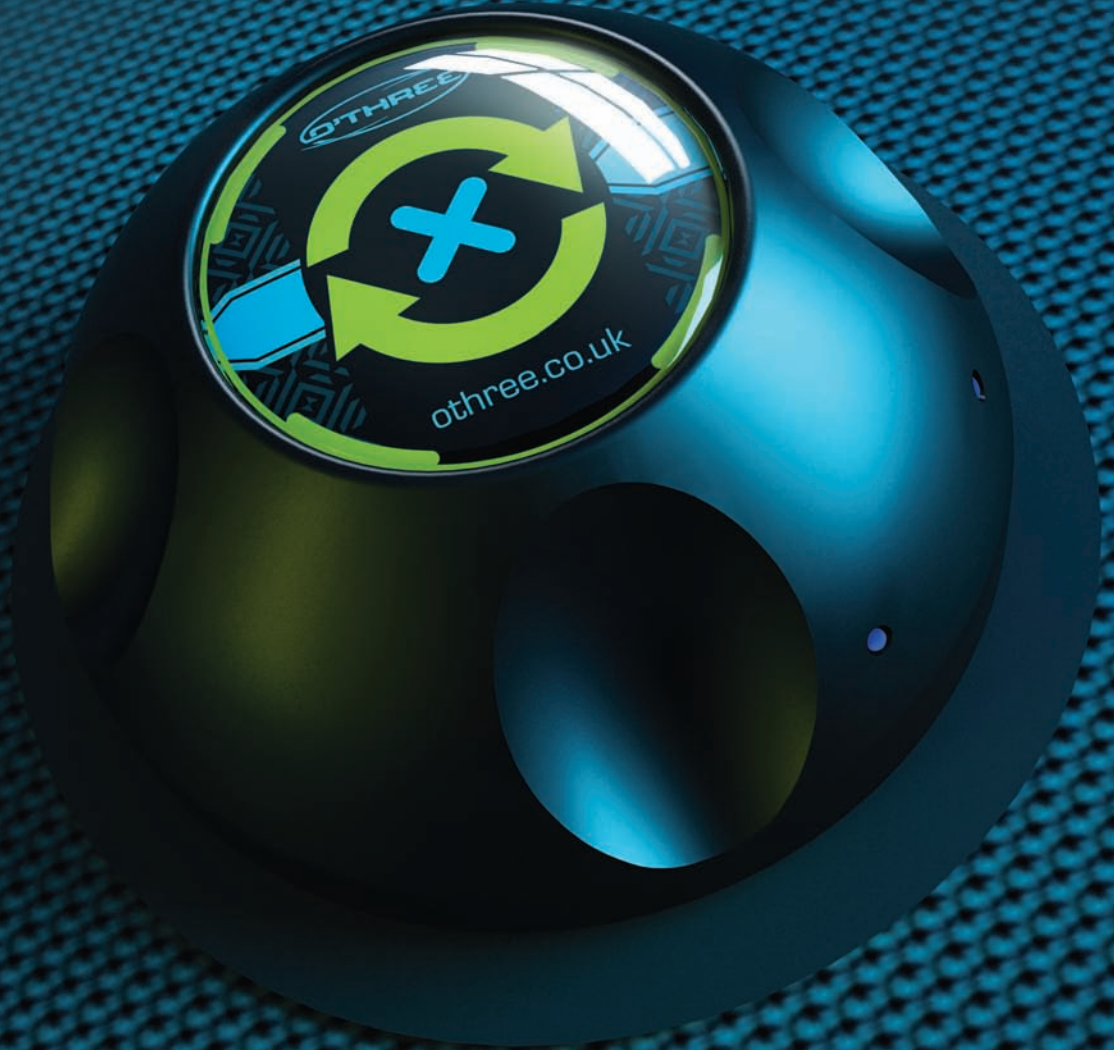




APV

ADVANCED P-VALVE



O'THREE'S NEW ADVANCED P-VALVE (APV)

Although bursting with features, this new valve remains neat and compact, both internally and externally, which we know will be a big advantage over others.

The APV will solve all of the issues concerning the most technical of technical divers and more. Unlike our original P-Valve, the APV is female friendly when used in conjunction with the "Shewee".

In recent years, new research and improvements in the understanding of decompression sickness has only added to the growing mountain of evidence that it is imperative we remain hydrated before and during long dives. O'Three's new APV will give all users reassurance and peace of mind that the consequences of hydration is no longer an issue and will again show just how serious O'Three take the extremes many of our customers find themselves in.



APV FEATURES INCLUDE:

- Field servicable design
- Lifetime warranty
- Valve consumables spare set, including the following components: Duck bill balance valve / O-rings / None return valve / Safety lock

1. NONE RETURN VALVE.
2. SAFETY LOCK.
3. EASY GRIP VENTED DOME, WITH MANUAL OVERRIDE.

4. REDUCED INTERNAL PROFILE.
5. BALANCED

6. 3X ANTI TWIST, ANTI KINK SHEATHS.
7. SURGICAL QUALITY SNAP-CONNECTOR
8. FLEXIBLE, ANTI-KINK, WIDE BORE HOSE - FLOW RATE INCREASED BY 3X.

GENERAL ADVICE

The sizing and fitting of the sheath is key. Come on guys, we all like to think things are a little larger, when in reality after a long spell in cold water "diver" willy sets in, rather than "poser" willy. Correct sheath sizing, may take one or two attempts.

Another top tip, do not leave it to the last minute to fit your sheath, apply in plenty of time before you set off for the days diving and then simply connect up, before you zip up.

OTHER USEFUL TIPS FROM CUSTOMERS OVER THE YEARS:

1. SHAVE ANY EXCESS HAIR... YOU KNOW WHERE.
2. USE SURGICAL WIPES BEFORE SHEATH APPLICATION AND AFTER SHEATH REMOVAL.
3. DO NOT LEAVE IT TO THE LAST MINUTE BEFORE YOU 'P', TRY TO REGULATE THE FLOW.
4. FLUSH THROUGH AFTER USE.

ATTACHMENT OPTIONS

O'Three recommends the following male and female adaptors:

- The Conveen Optima from Coloplast (www.coloplast.co.uk)
- The Shewee Go (www.shewee.com)

Replacement sheaths are also available from O'Three. The APV comes complete with and all the necessary glues, components and fitting instructions. If in doubt, please contact O'Three.

The Shewee Go is a urinating device for active sportswomen which may be worn for an array of adventure sport pursuits. Custom Divers has successfully adapted the application of the Shewee Go specifically for the use of female divers.

The Shewee Go is worn like a g-string or thong and is fitted inside tight fitting elasticised shorts for comfort and privacy. Held in position with 3 adjustable and flexible straps, the soft rubber Shewee Go seals comfortably in place outside the body.

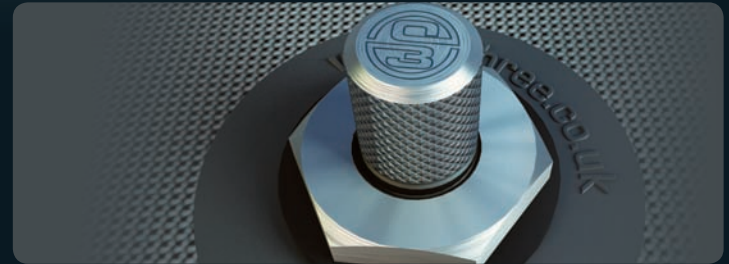
For additional information regarding the Shewee Go, we advise that you talk to the experts at www.customdivers.com.



O'THREE'S ORIGINAL P-VALVE

The original O'Three P-Valve is the only valve of its type that has been NATO tested, approved and certified! Despite the launch of O'Three's new APV (Advanced P-Valve) we will continue to supply this simple popular balanced valve.

The original O'Three P-Valve enables male divers to urinate whilst submerged. All components, from the nickel-plated non-ferrous metal to the main acetal body are machined and finished to the highest standard. A short length of flexible, anti-kink, wide bore hose connects to a quality penile sheath via a positive snap connector.



Terms and Condition of the life time warranty for the APV:

- The life time warranty applies only to the original purchaser and is not transferable to any other party. Original receipt required.
- The life time warranty does not cover the consumables, ie; the snap connector, anti kink hose or sheaths.
- The life time warranty does not cover postage for any replacement.
- O'Three Ltd reserve the right to reject any claim which is thought to have occurred due to lack of care and abnormal use.